

Jakoblife



Product Name: Body Composition Scale

Model: JL -5100

Manufacturer: Jianbo Microelectronics (Nanjing) Co., Ltd.

Company Address: Room 1608, Building B, Kechuang
Headquarters Building, No. 320 Pubin Road, Nanjing Area,

Jiangsu Free Trade Zone, China

email: cs@jakob-techs.com

Body Composition Scale JL-S100

User Manual

Table of Contents

Table of Contents.....	02
Safety Information	03
Product Introduction	05
App Binding Instructions.....	08
Measurement Instructions	11
Precautions	13
Maintenance.....	15
Specifications	16
Hazardous Substances.....	17
Trouble shooting	18
Warranty Information	20

Safety Information

Before using this product, please read this manual carefully and keep it properly.

& Warning

1. Usage Restrictions

- Do not use this device in the following locations, as it may interfere with other electronic equipment or cause other hazards: medical facilities, areas where the use of wireless electronic devices is explicitly prohibited, gas stations, fuel or chemical storage and transportation areas, and any locations near flammable materials or chemical substances.
- The radio waves generated by this device may affect the normal operation of implanted medical devices or personal medical equipment. If you are using implanted devices such as a pacemaker, cochlear implant, or hearing aid, please consult a qualified physician in a Class III hospital or your attending doctor before use. Only use the device with medical approval and under supervision, and ensure a safe distance is maintained between this device and the implanted medical equipment.
- This product contains a lithium battery and accessories. Keep them away from children and pets to prevent injury or device malfunction.

2. Special User Groups

- Minors under 6 years old and seniors over 80 years old.
- Pregnant women and women in the postpartum period.
- Individuals with limb loss or high-level paraplegia.

- Patients with spinal, joint, or skeletal abnormalities, including osteoporosis, cervical spondylosis, lumbar disc herniation, or other orthopedic conditions.

- Patients with colds or fever.
- Patients undergoing dialysis.
- Professional athletes.

3. Individuals Requiring Caution

If you meet any of the following conditions, please consult a qualified physician in a Class III hospital or your attending doctor before use. Only use the device with medical approval and under supervision:

- Individuals with sensory impairments or mobility difficulties caused by illness or aging.
- Individuals with fractures or metal implants (such as surgical screws).

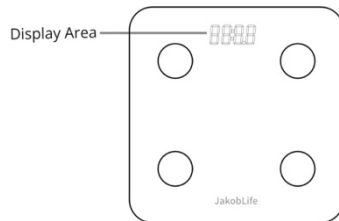
Product Introduction

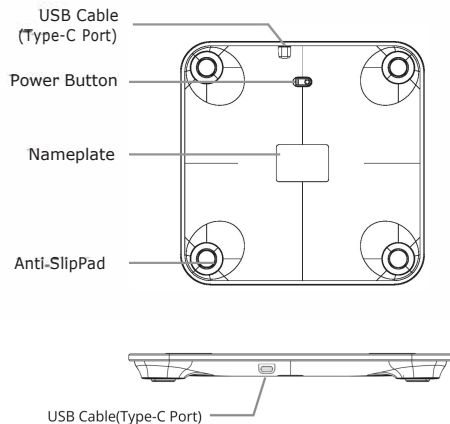
1. Purpose of the Body Composition Scale

This device provides measurements of weight, body fat, and other health data for individuals concerned with health, weight management, and body shaping.

2. Disclaimer

- This device is not a medical instrument. The provided parameters and measurement analyses are for reference only and should not be used for disease diagnosis, prevention, treatment, or monitoring. It is not intended for use in clinics, hospitals, or other medical institutions.
 - The illustrations of the product, accessories, and user interface in this manual are for reference only. Due to product updates and upgrades, the actual product may differ slightly from the illustrations. Please refer to the actual product.
- ### 3. Product Illustration





	Bluetooth icon: indicates Bluetooth connection status.
st	In setting mode.
lb/ kg	Weight Unit Icon: indicates the measurement unit is lb/kg.
	The person being measured exceeds 180 kg.
	Low Battery Icon: indicates low battery; please charge promptly.

***Special Instructions:**

- For weighing small items under 1.5 kg, step on or press the scale surface to wake the scale. Begin measurement only after the display shows 0.00 kg. This product does not include a power adapter. Please use a power adapter with 5V output and current of 1A or higher for charging.

App Binding Instructions

1. Download the Jakoblife App

Download and install the Jakoblife App from the Google Play Store (Android) or the App Store (iOS), or scan the QR code below.



iOS



Google Play



Android

2. Register and Log In

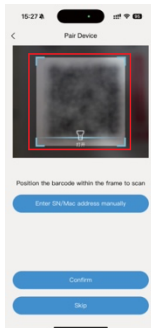
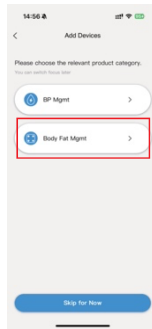
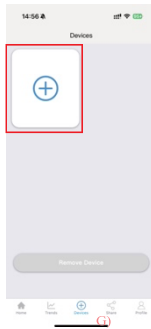
Follow the instructions in the app to register and log in to your "Jakoblife" account. If you are already logged in, please proceed directly to Step 3.

3. Bind the Body Composition Scale

(1) On the "Device" page, tap the "+" icon, then select "Body Fat Mgmt".

(2) The corresponding series of devices will appear. Select the appropriate device (this device is JL-S100) and scan the QR code on the back of device to bind.

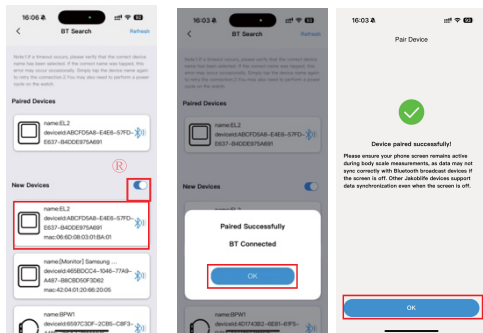
(3) After scanning the QR code, the matching device will appear automatically. Then press "Confirm".



(4) The app will automatically switch to the Bluetooth search interface. Activate "Search for New Devices" and tap the discovered device to pair.

***Note: The device must be in an active state during the Bluetooth search; otherwise, it will not be detected.**

(S)After selecting the corresponding device, it will be automatically paired. Once the pairing is successful, tap "OK" to confirm.



Measurement Instructions

1. Place the Body Composition Scale on a hard, flat surface, ensuring all pads are level with the ground.
2. Make sure the Body Composition Scale is connected to the app; otherwise, only body weight can be measured.
3. Stand barefoot on the scale with knees and feet slightly apart. Ensure both feet are firmly in contact with the surface, covering the electrodes as much as possible, and maintain a natural standing posture during measurement.
4. The scale will first measure body weight. Once the weight reading is stabilized, it will begin measuring other body composition parameters.
5. After the measurement is completed, you can view the detailed body report in the app.

Correct Measuring Posture



Stand barefoot
on the scale



Stand with feet apart
knees straight



Feet fully contact
the metal electrodes



Stand naturally

Incorrect Measuring Posture



Measuring with
socks on



Knees bent
feet together



Feet not fully contacting
the metal electrodes



Measuring
while squatting

Precautions

- To ensure measurement accuracy, please complete measurements with clean and dry feet, wearing light clothing, and with bare feet in full contact with the metal electrodes.
- Do not move your feet or step off the scale during measurement.
- Avoid using the scale immediately after intense exercise, excessive alcohol consumption, large meals, or sauna/bathing. Wait until your body has returned to its normal state to perform measurements to prevent inaccurate results.
- The scale supports both lb and kg units.
- Use the product in a dry environment. Do not operate it in bathrooms, washrooms, or other humid areas.
- Do not immerse the product in water or any other liquids.
- Do not measure with wet feet or on a wet scale surface to prevent slipping.
- Do not use the product in environments exceeding 40°C or below 0°C, near strong magnetic fields, or in humid, dusty, or corrosive environments. Keep away from heaters, microwaves, ovens, water heaters, open flames, candles, or other heat sources to avoid device malfunction.
- Do not subject the product to impacts, compression, drops, throwing, or scratching. Strong impacts may damage the scale surface. If the product is damaged, discontinue use immediately and contact after-sales support. Do not touch or attempt to remove broken parts.

- Operate the product in accordance with the instructions provided in this manual.

Battery Safety Warning

- This product contains a built-in lithium battery. Do not attempt to disassemble, replace, or modify it, as doing so may cause battery damage, leakage, overheating, or explosion.
- Do not expose this product to high temperatures (such as direct sunlight or open flames) or extremely low temperatures. The recommended operating temperature is between 0°C and 40°C.
- If the device will not be used for an extended period, please ensure it is charged at least once every three months to prevent over-discharge and deterioration of battery performance.
- Do not dispose of this product in fire or attempt to incinerate the lithium battery. When discarding, follow local regulations and hand it over to designated recycling facilities for environmentally safe disposal.
- Stop using the product immediately and contact after-sales service if any of the following occur:
 - (1) The battery appears swollen, deformed, or emits an unusual odor;
 - (2) The device becomes abnormally hot during use;
 - (3) The product cannot be charged or discharged normally.

Maintenance

1.Daily Maintenance

- Regularly clean the device with a slightly damp soft cloth, optionally using a neutral detergent, and then wipe dry with a dry cloth or paper towel. Do not use alcohol, solvents, or corrosive solutions to clean the device, as this may cause malfunction, cracking, or discoloration.
- Do not use external heating devices such as microwaves or hair dryers to dry this product.

2.Storage

- Do not store or transport this product together with flammable or explosive materials.
- If the device becomes excessively hot, deformed, or swollen during storage, stop using it immediately and contact the after-sales service center.

Specifications

Name	Body Composition Scale
Model	JL-S100
Wireless Connectivity	BlueTooth
Net Weight	1245g
Dimensions	280 x 280 x 25mm
Rated Voltage	3.7 V
Lithium Battery Capacity	300 mAh
Weighing Unit	1.25kg
Minimum Division	0.05kg
Weighing Range	0.3-180 kg
Operating Temperature	0-40°C
Exterior Material	Tempered Glass+ ABS Plastic
Manufacturer	Jakob Semiconductor (Nanjing) Co.,Ltd
Address	Room 1608, Kechuang Headquarters Building, Pubing Road 320, Pukou Avenue, Nanjing Area, Jiangsu Free Trade Zone, China 211899
	cs@jakob-techs.com
Date of Manufacture	Refer to product packaging

Hazardous Substances

Component Name	Hazardous Substances or Elements					
	PB	Hg	Cd	Cr(YI)	PBB	PBDE
Enclosure	0	0	0	0	0	0
Internal Metal Parts	0	0	0	0	0	0
PCB Assembly	X	0	0	0	0	0
Internal Non-metallic Parts	0	0	0	0	0	0
Battery	0	0	0	0	0	0
<p>This table is compiled in accordance with SJ/T 11364:</p> <p>0 : Indicates that the content of the hazardous substance in all homogeneous materials of the part is below the limit requirement as specified in GB/T 26572.</p> <p>x: Indicates that the content of the hazardous substance in at least one of the homogeneous materials of the part exceeds the limit requirement as specified in GB/T 26572.</p>						

Troubleshooting

Malfunction Description	Possible Cause(s)	Solution(s)
Cannot power on/ Unable to measure weight properly	Battery is dead or has insufficient charge	Please replace the battery before use or recharge it
Significant weight measurement deviation	Foreign objects on the scale feet / Obstruction at the edges / Not placed on a hard, flat surface	Check and remove any foreign objects or obstructions, place the scale on a hard, flat surface, and gently tap the four corners with your fingers to ensure there is no gap before retrying.
	The scale does not display 0.0kg before measurement.	Wake up the scale and wait until the display shows 0.0 kg before measuring. If there is a residual value on the display, wait for the scale to turn off, then wake it up again and confirm 0.0 kg before stepping on the scale to measure.
The app cannot display measurement data	Unstable Bluetooth Connection or app is not active	Bluetooth is not connected to the mobile app / Bluetooth connection is unstable. Please disconnect and reconnect Bluetooth according to the instructions. Make sure app is active and you stay in home page.
Displays Low	low battery	Please use a USB charging cable to charge the device, and use it only after charging is complete.
Displays overload	Exceeds the maximum weighing range	Please refer to the relevant product specifications in this manual. If the actual weight exceeds the specified range, avoid further use to prevent damage to the device.
		Ensure the scale surface is clean, flat, and free of any foreign objects under the feet. Place the product on a hard, stable surface for testing to avoid measurement inaccuracies caused by soft or uneven surfaces.
Displays "Err"	Body impedance error	Please measure in the correct posture: stand barefoot on the scale with both feet in full contact with all four electrodes.

		During measurement, avoid touching the inner thighs, both legs, or both feet together.
		In dry weather or if the soles of the feet are too dry or too wet, clean the feet and electrodes with a slightly damp towel before measuring again.
		Do not use the product for measurement immediately after abnormal conditions or intense exercise. Please wait until your body is in a stable state before measuring again.

*If the above methods do not resolve the issue, please contact customer service for further assistance.

Warranty Information

After-sales service for the Smart Body Fat Scale JL-S100 is provided under the "Three Guarantees" policy, with the following service coverage:

1. Warranty Policy

- Within 7 days from the day after you receive the product: If the product exhibits any performance faults listed in the "Product Performance Fault Table", and such faults are confirmed by our after-sales service center, you are entitled to free return or exchange service.
- From 8 to 15 days after receipt: If the product exhibits any performance faults listed in the "Product Performance Fault Table", and such faults are confirmed by our after-sales service center, you are entitled to free exchange or repair service.
- Within 12 months from the day after receipt: If the product exhibits any performance faults listed in the "Product Performance Fault Table", and such faults are confirmed by our after-sales service center, you are entitled to free repair service.

2. Product Performance Fault Table

Name	Performance Fault
Body Composition Scale	<ul style="list-style-type: none">• Functions listed in the manual fail• Cannot power on; unable to measure weight properly• Casing cracks due to structural or material factors

3. Non-Warranty Provisions

- Unauthorized repairs, misuse, collisions, negligence, abuse, liquid ingress, accidents, modifications, improper use of the product, or tearing/altering labels or anti-counterfeit marks. Beyond the valid period of the "Three Guarantees" service.
- Damage caused by force majeure.
- Conditions that do not correspond to the performance faults listed in the "Product Performance Fault Table".
- Performance faults listed in the "Product Performance Fault Table" caused by human factors.

4. Notice

- The packaging used during transportation ensures the safety of the product. It is recommended to retain the packaging for at least 30 days from the date of receipt.
- Due to the structural design of this product, repair service is provided through replacement.

***For after-sales service, please contact via email:**

cs@jakob-techs.com